



work safe
13 of 20

20 days
20 ways

20 days
20 ways

TO END
VIOLENCE
AGAINST
WOMEN



November 16th

to

December 6th

It's past the time
for the Government
to take action
to end
Violence Against Women

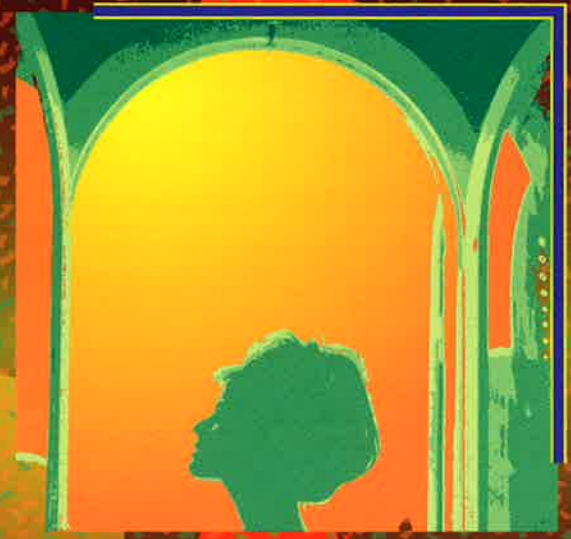
www.canadianlabour.ca

20 days
20 ways



shelter
and
support

8 of 20



20 postcards

to send a message



Send a postcard a day to the Prime Minister to remind him that for twenty years women have been waiting for action. Each year, women across the country commemorate the fourteen young women who were killed on December 6, 1989, at the Ecole Polytechnique in Montreal and all the other women who have died as a result of male violence.

Twenty years is too long. Government attention to violence against women is long overdue. A law and order agenda is not the answer. Women need economic and social security to be safe at home, at work and in our communities. We need support for women's services and equality. Now is the time for action.



20 days
TO END
VIOLENCE
AGAINST
WOMEN



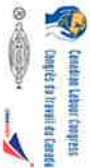
December 6 marks the 20th anniversary of the 14 young women murdered in Montreal. Remembrance is not enough. Government action is needed.

WORK SAFE: A Safe Place to Work

Violence often follows women from home to work. In the last ten years there was a 40% increase in violence in workplaces. To protect women, health and safety laws must include violence as a workplace hazard.

Signature

City/Province



CAW, CER, CFNU, CUPE, CUPW, ETFO, NUPGE, OSSTF, PSAC, UFCW, USW, AFL, BCFL, MFL, NBFL, NLFL, NSFL, NTFL, OFL, PEIFL, QFL, SFL, YFL www.canadianlabour.ca

No Postage Needed

20 days
TO END
VIOLENCE
AGAINST
WOMEN



December 6 marks the 20th anniversary of the 14 young women murdered in Montreal. Remembrance is not enough. Government action is needed.

FUNDING WOMEN'S SHELTERS: Shelter and Support

Last year more than 100,000 women and children used shelters and their front-line advocacy and support. Funding for shelters must be substantially increased.

No Postage Needed

Office of the Prime Minister
80 Wellington Street
Ottawa ON
K1A 0A2

Signature

City/Province



CAW, CER, CFNU, CUPE, CUPW, ETFO, NUPGE, OSSTF, PSAC, UFCW, USW, AFL, BCFL, MFL, NBFL, NLFL, NSFL, NTFL, OFL, PEIFL, QFL, SFL, YFL www.canadianlabour.ca

Office of the Prime Minister
80 Wellington Street
Ottawa ON
K1A 0A2